

## MD400 MECHANICAL SPECIFICATIONS DATA SHEET

**Accuracy (per NIST Handbook 44 for Class III devices)**

**“All GEC Products are made in the USA”**

0 to 2,500 lbs. ± 50 lbs.	± 50 lbs.
2,550 to 10,000 lbs.	± 100 lbs.
10,500 to 20,000 lbs.	± 150 lbs.
Operating Temperature	0°F (-18°C) to + 120°F (49°C)
Storage Temperature	-50°F (-46°C) to + 180°F (82°C)
Power Requirements	None
Options	<ul style="list-style-type: none"> <li>• Available in Kilogram graduation</li> <li>• Available in x 10 lbs. Vernier (MD400C)</li> <li>• Storage Case</li> </ul>
Accuracy	1% of applied load

**Dimension**

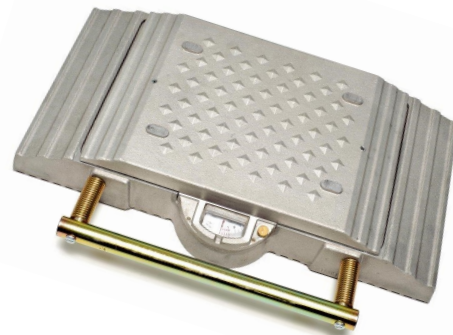
Overall Length	20-1/2” inches
Overall Width	14” inches
Height	3-1/8” inches

**Weighing Surface**

Length	11” inches
Width	10” inches
Weight	42 lbs (19 kgs)
Capacity	0 to 20,000 lbs (0 to 10,000 Kgs)

**Features**

- Intrinsically Safe**
- Unlimited Terrain (5% slope)**
- Weighable on gravel surface**
- Roll over protected dial**
- Rugged design**



MD400

PROPRIETARY NOTICE

This document contains information which concerns or relates to trade secrets, processes, operations, pricing, style of work apparatus, or to identity, confidential statistical data amount source or any income, profits, losses or expenditures of General Electroynamics Corporation. Such information is being submitted in confidence with the understanding that it will not be disclosed to third parties in whole or part without the express written consent of an officer of General Electroynamics Corp. (Reference Trade Sec. Rets Act, 18U.S.C. 1905)